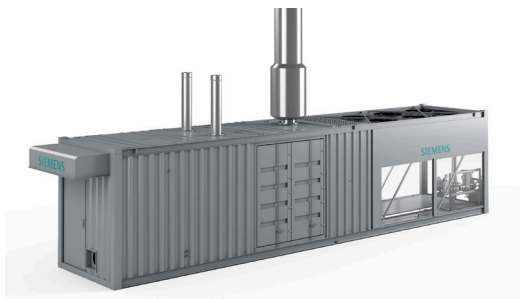




As a Siemens Energy Solution Partner, Kraft Power provides engines, generator sets, and combined heat and power systems over a broad range of outputs and available configurations.



Flexibility Through Dynamic Fuel Blending

Siemens Energy offers dynamic fuel blending, combining gaseous fuel supplies from two different, separate sources. Dynamic fuel blending actively manages the composition of fuels while the engine is running and keeps the desired control algorithm outcome to compensate for the variability of one fuel source (e.g. biogas) by using/supplementing a second gas (e.g. natural gas) from a known reliable source with actual 0-100% blend ratio capability.

SL- Series

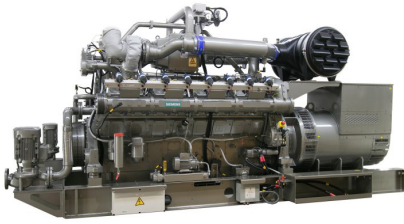
Ideal for power generation, and cogeneration mechanical drive applications, these lean burn, electronically carbureted engines have an output range from 241 to 1028 kWe @ 60 Hz with a choice of 1200 RPM or 1800 RPM speed governing. Offering fuel blending and fast starts, these engines can be powered by natural gas, landfill/sewage gas, flare/well gas, or syngas. Conventional Otto cycle combustion, robust design, and excellent reliability. Supplied as a standalone engine, genset, or fully containerized unit. Integrated genset control systems and protective relay solutions available.



SR- Series

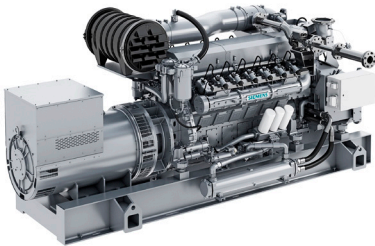
Designed for rich-burn power generation, electronically carbureted SR Series engines offer strong performance. Outputs range from 180 to 870 kWe @ 60 Hz and may be fueled by natural gas and well gas with superb fuel flexibility. The SR Series features a double circuit cooling system in which different auxiliary cooling circuit temperatures are achievable. With a wet exhaust manifold, these machines are supplied as a stand-alone engine, a genset or a fully containerized unit.





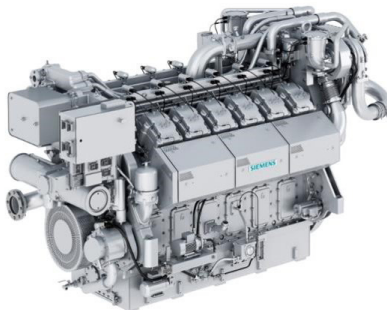
SM- Series

Lean burn Miller Cycle combustion and electronically carbureted, the SM series provides an excellent solution for power generation and cogeneration applications fueled by propane gas. Designed and tested for LPG operation with no power derate. Continuous electrical power generation ratings from 336 kWe to 1030 kWe.



HM- Series

High efficiency Miller Cycle combustion, with special heads, valves, camshafts, and turbochargers. The HM family has an electrical output range from 502 to 1308 kWe @ 60 Hz continuous. Fueled by natural gas, or biogas with standard factory tuning down to 0.5g NOx / bhp-hr.



EM- Series

Offering best-in-class 45.5% electrical efficiency, Siemens Energy model 100EM is ideally suited to natural gas base load CHP and pure power generation applications. This true 1200 RPM engine governed package delivers all of the lower operating speed life cycle advantages with no need for a gearbox. This direct drive system also makes the 100EM more compact, to better suit space-compromised installations. Continuous rated 2MW @ 1200 RPM / 60Hz.

Service, Support, & Parts



Kraft Power is a service provider with over 55 years of experience with gas engines and power systems. We maintain wide inventories of service parts, and a responsive supply chain for original and upgraded components. Custom service plans can be configured to include maintenance and planned overhauls for a fixed price per operating hour. Alternatively, the agreement can cover routine maintenance only, or major services only, depending on the customer's budgeting process, and capability to self-perform some service tasks.